

**KENT T13US BALCONY 50A POWER IGU**

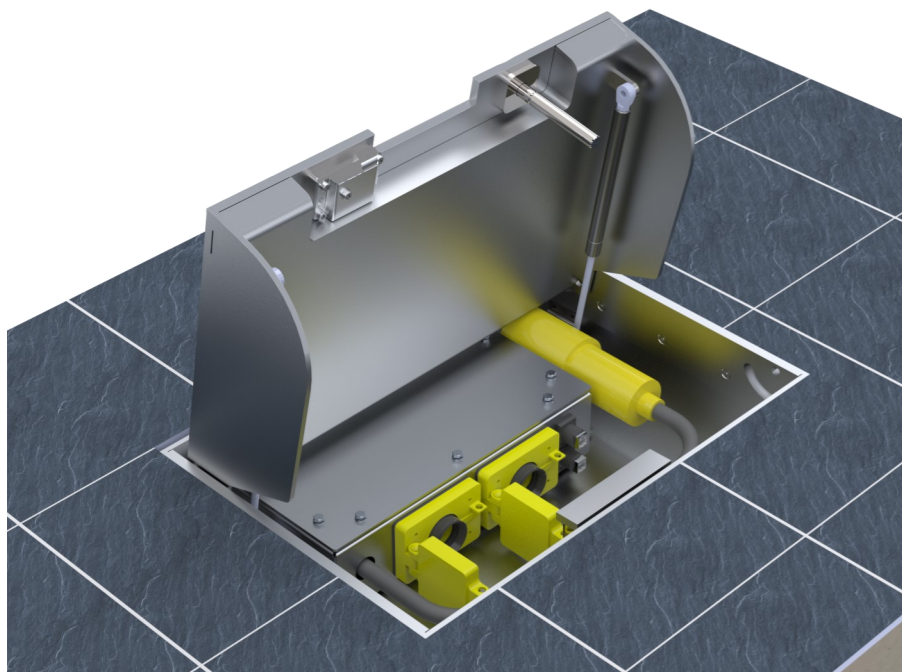


Our Type 13 In Ground Unit for the USA market has a 24" x 16" top cover - recessed 1.5" to take 1" pavers plus bedding. This sometimes requires the paving contractor to cut back paving sets to suit. This facilitates an extremely shallow 7" depth.

UL Listed electrical components are housed under a hinged recessed manhole cover. The cover itself can withstand slow moving wheel loads with a 2800 lb point load

This outdoor In Ground Power Box allows, coffee carts, musical performers all to plug into power while eliminating the trailing cables and cords and avoiding the noise and pollution associated with a portable gas generator. The 50 Amp socket can be used to plug in a distribution board for more users. Plus 2 RJ45 sockets are also supplied

A 'notch' on the front cover can be revealed or concealed. When revealed the power cords can exit via this notch allowing the unit to be used to deliver power while it is in the closed position

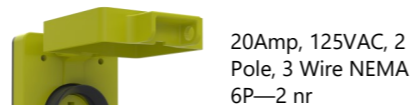


**Features**

- 7" Deep (170mm)
- Gas Rams
- Up to 2nr NEMA 6P rated 20 Amp receptacles plus 1nr 50 Amp plus 2nr RJ45 Data sockets
- Suitable for Balconies, Terraces, Roof Gardens
- 2" dia drainage outlet

**Designed For**

- 1nr 50A 3 Phase
- Plus 2nr 20A 1 Phase
- Plus 2nr RJ45 Data Points



**Light Duty Loading**

Up to 5,700 lbs test load to guarantee a point load of 2,800 lbs. Designed for use on sidewalks or terraces

Our tests are done on an unfilled recessed cover

Product Code	Visible Frame Size	Unit Depth	Cable Duct (Ø)	Drainage (Ø)
KIGU T3US 24"/16"	24" x 16"	7"	2"	2"

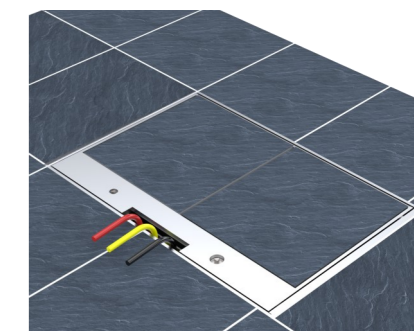
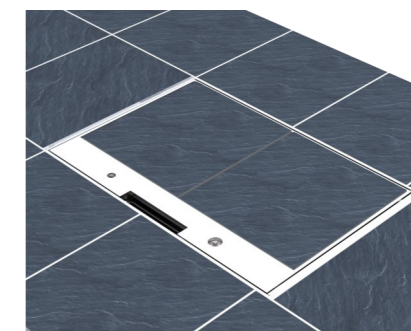
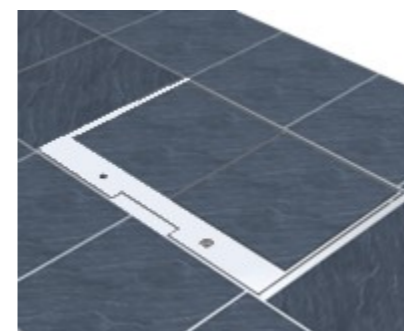
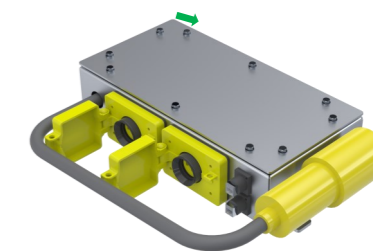
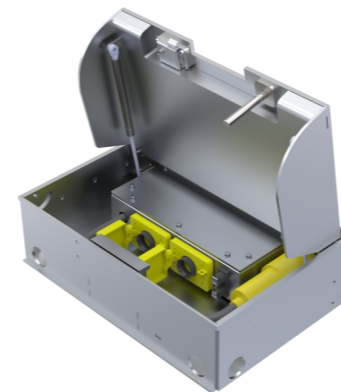
Specify: Kent IGU - Type 3(US); (KIGU 24/16); 24" x 16" top ; with a 7" depth; Grade 316 Stainless Steel; 1nr 50 Amp 3 Phase Receptacle plus 2nr 20 Amp 1 Phase Receptacle plus 2nr RJ45 Data Points. 2" Bottom Drain outlet must be connected to a 2" drain pipe on site

**KENT T13US BALCONY 50A Power IGU**



Designed for:

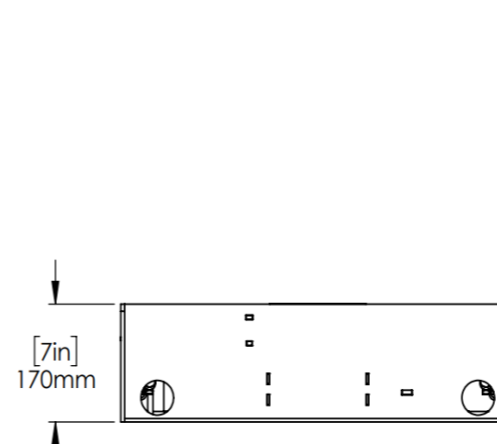
- 3 Food Carts x3
- Plus 2 Data /Audio-Visual x2



Ground fault protection as well as overload and short circuit protection must be provided elsewhere on the circuit

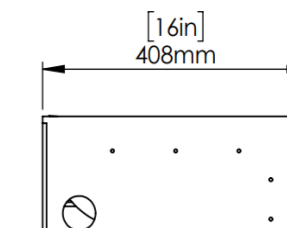
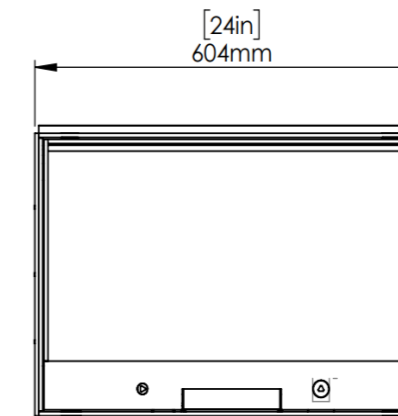
Paviour directly adjacent to frame to be bedded using an epoxy mortar or polymer modified mortar.

**IP67—NEMA 6P JUNCTION BOX TO BE RESIN FILLED BY ELECTRICAL CONTRACTOR ON SITE**



Alternative knockouts for 2"Ø (50mm) cable duct laser cut hole knockout

2"Ø (50mm) horizontal drainage outlet **NB ensure connection to drainage system**



MINIMUM CONCRETE SURROUND C35/45