



Our Type 11 In Ground Unit for the USA market has a 34" x 23" top cover - recessed 2.5" to take 2" paver blocks plus bedding.

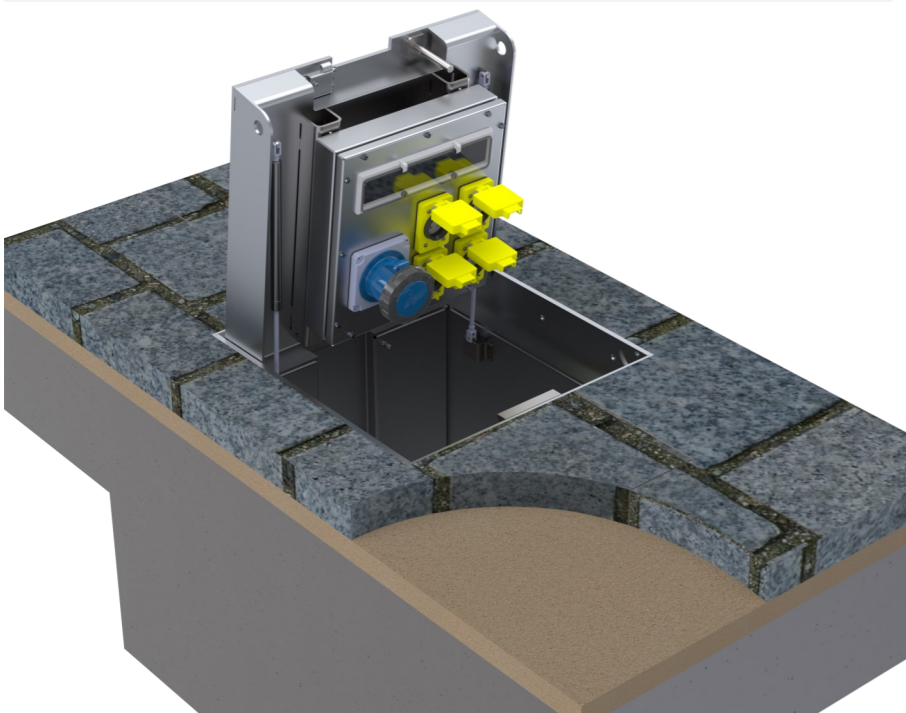
UL Listed electrical components are housed under a hinged recessed manhole cover. The cover itself can withstand slow moving wheel loads from a 40 ton truck.

This outdoor In Ground Power Box allows 4 Food/Coffee Carts to plug into power while eliminating the trailing cables and cords and avoiding the noise and pollution associated with a portable gas generator.

It also allows a 100 amp connection for very heavy duty power requirements—e.g. for a stage or ice rink or for plugging in a distribution board which further supplies power to many other vendors

Individual electrical circuits work in parallel (not in sequence) - so 1 vendor tripping their circuit will not affect the neighboring vendor

A 'notch' on the front cover can be revealed or concealed. When revealed the 20 amp power cords can exit via this notch allowing the unit be used to deliver power while it is in the closed position. The 100 amp power cord is extremely thick with a long bend radius and this necessitates the use of the box in the open position when plugging onto the 100 amp socket.



Features

- Gas Rams
- 1 x 100 Amp plus 4 x 20 Amp NEMA 6P rated receptacles
- Suitable for Stage Power plus Market Trading Areas
- 4" dia drainage outlet pipe

Designed For

- 1nr 100A 3 Phase plus 4nr 20 Amp 1 Phase
- Typically for access by Stage Power, or Ice Rinks

Also used by lower power vendors coffee carts / access by maintenance crews for Power Washers, Lighting, Monolith Displays, Ticket Sales

- Contact us for alternate utility configurations that could fit in the same box



Medium Duty

AASHTO H20 Loading

Factory tests are carried out of 24,800lbs point load from a 9" footprint of a pneumatic tyre from a heavy goods vehicle.

16,000 lbs is the H-20 Design Loading Criteria.

Our tests are done on an unfilled recessed cover

| Product Code | Visible Frame Size | Unit Depth | Cable Duct (Ø) | Drainage (Ø) |
|--------------------|--------------------|------------|----------------|--------------|
| KIGU T11US 34"/23" | 34" x 23" | 26" | 5" | 4" |

Specify: Kent IGU - Type 1(US); (KIGU 34/23); 34" x 23" top ; with a 26" depth; Grade 316 Stainless Steel; 1nr 100 Amp 3 Phase plus 4nr 20 Amp 1 Phase NEMA L5-20 Receptacles. 4" Bottom Drain outlet must be connected to a 4" drain pipe on site



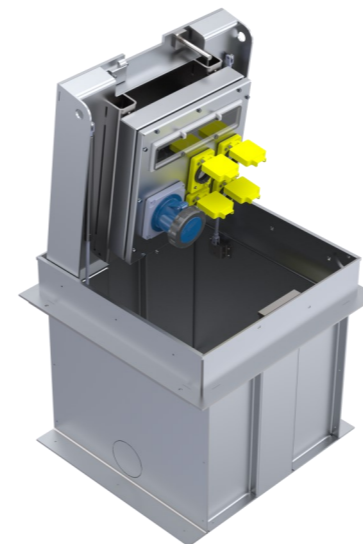
Designed for:

- Stage Power
- +
- 4 x Food Carts x4

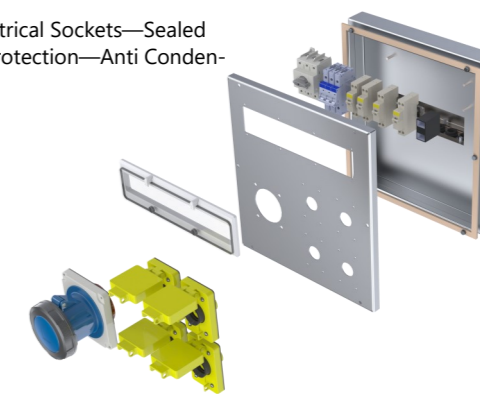


1 x 100 Amp - for Stage Power

4 x 20 Amp + for Food Carts



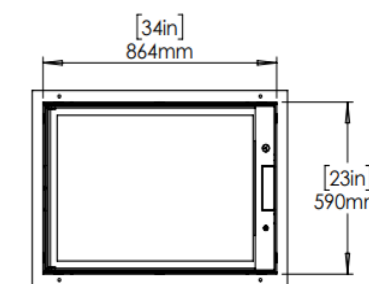
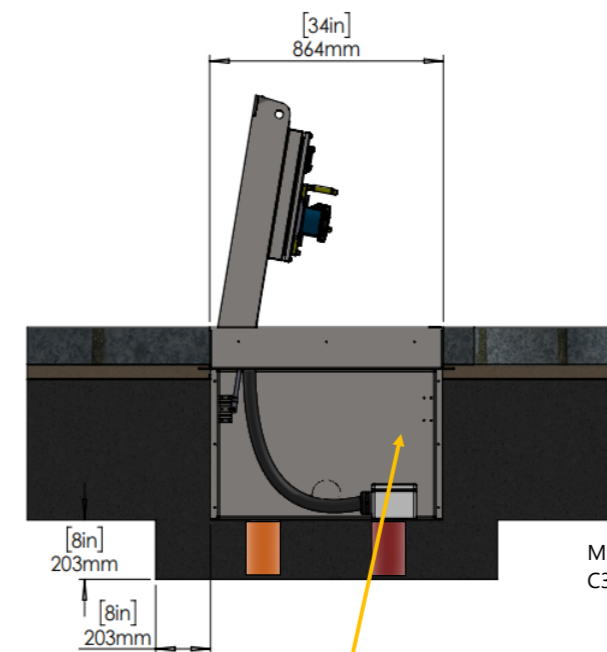
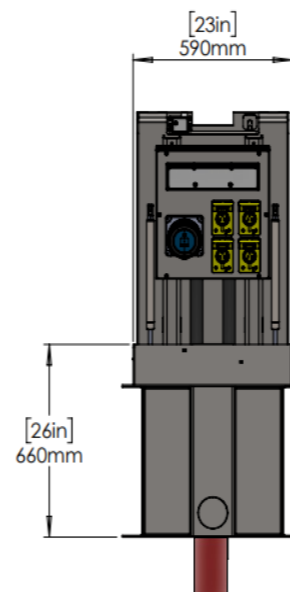
Panel Contains Electrical Sockets—Sealed Window—Circuit Protection—Anti Condensation Heater



Paviour directly adjacent to frame to be bedded using an epoxy mortar or polymer modified mortar.

Alternative Knockouts For 5"Ø (125mm) Cable Duct Laser Cut Hole Knockout

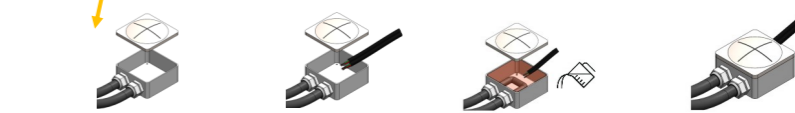
2 stage delivery - outer box delivered to site first followed by electrical panel (above) - to be connected by registered electrical installer



Minimum Concrete Surround C35/45

4"Ø (110mm) vertical drainage outlet pre-welded to bottom of box

NB ensure connection to drainage system



Connect incoming power to IP67 NEMA 6P junction box - Fill with resin and close