

# Kent Power Bollard



The Kent Power Bollard KPB1050 is manufactured from Grade 316L Stainless Steel with a Bright Peened Finish as standard. The bollard stands 1050mm (41.34") above ground level.

219mm (8.62") is the standard diameter with 2nr 32 Amp 3 phase sockets.

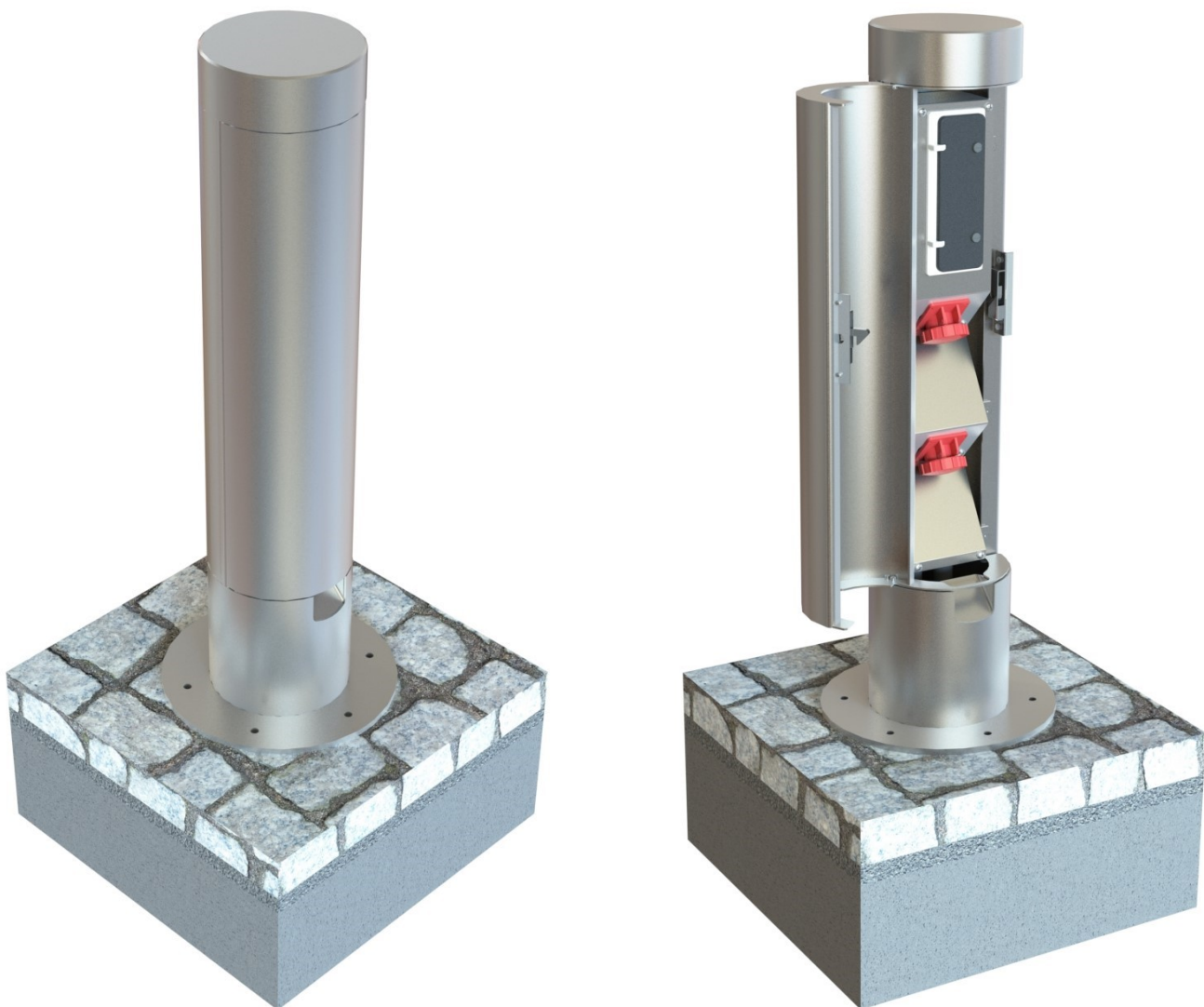
This product is ideal for town centre environments, sporting arenas, shopping centres, events or anywhere temporary power may be required but depth is not available to recess power into an In Ground Power Unit.

**Features:**

- Grade 316L Stainless Steel
- Flat top with 25mm recessed reflector strip— optional

**Designed for:**

- 2nr 32 Amp 3 Phase
- Or
- 2nr 16 Amp 1 Phase



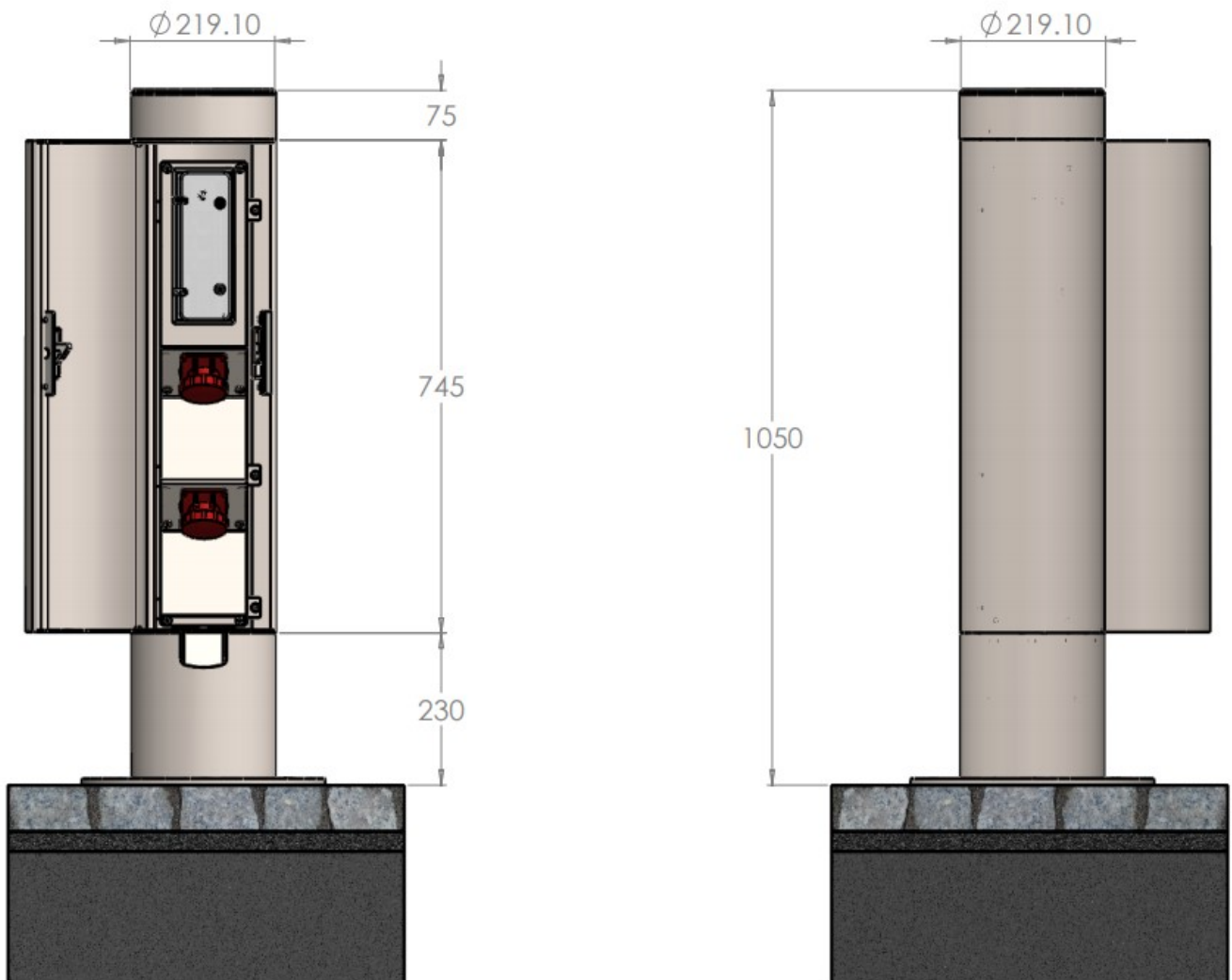


Product	Diameter	Height	Sockets
KPB1050	219mm (8.62")	1050mm (41.34")	1 / 2
KPWB1200	256mm (10.08")	1200mm (47.24")	1 / 2 + Water

## Specify

### Specify:

Kent Power Bollard (KPB 1050); Grade 316L Stainless Steel; 1050mm Height, 219mm Dia , Bright Peened Finish, 2nr 32 Amp 3 Phase Sockets; Flat Top; Visible Flange







**Kent Stainless Ltd**  
Ardcavan, Wexford, Ireland

**TEL NO:** +353 53 9143216  
**UK FREEPHONE:** 0800 376 8377  
**FAX:** +353 53 9141802  
**WEB:** [www.kentstainless.com](http://www.kentstainless.com)  
**EMAIL:** [info@kentstainless.com](mailto:info@kentstainless.com)

