

## KENT KRE200/110 SQ

The Kent KRE200/110 SQ is a Sealed Rodding Eye or Cleanout. It has a Round Body, Square Top Bottom Outlet and can be used for Heavy Duty Areas. It is also available with a 45 degree angled outlet.

This is a sealed cleanroom rodding eye created by a 10mm top plate locked down onto a neoprene seal.

They are designed for use primarily in Pharmaceutical factories. They can be used in both light duty and very heavy duty trafficked areas (sealed gullies are most often used in laboratories or cleanrooms which are limited to pedestrian traffic – however the 0.39" (10mm) top plate makes it possible to drive heavy factory traffic over these gullies).

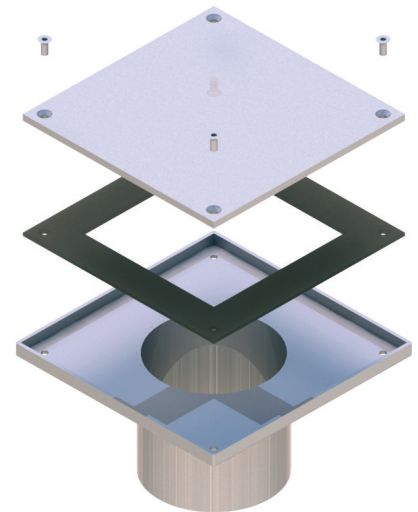
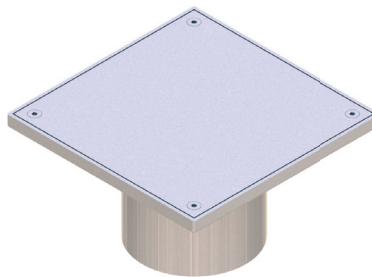
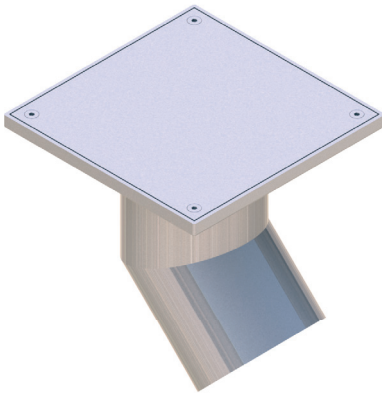
### Features

- Grade 314 (1.4301) or 316 (1.4401) Stainless Steel to BS EN 10088.
- Usable in both heavy and light duty areas
- Suitable for internal factory drainage

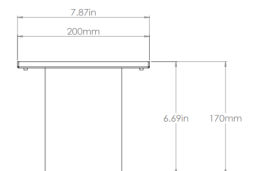
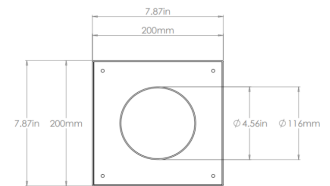


**Forklift**  
Heavy Duty

**Specify: EN1253 Load Class  
M125 or N250**



Product Code	Height	Width	Outlet
KRE200/110 SQ	6.69" (170mm)	7.87" (200mm)	4.33" (110mm)
KRE250/160 SQ	6.69" (170mm)	9.84" (250mm)	6.29" (160mm)
KRE200/110/45 SQ	6.69" (170mm)	7.87" (200mm)	110mm (45 degree)



**Specify: Kent KRE200/110 SQ Rodding Eye Cleanout; 200mm diameter; grade 316L Stainless Steel; complete with sealed cover.**

**BS EN1253 Loading Class L15 / R50 / M125 / N250 / P400**

Choose Holding Flange or Connection Flange from Page 11.