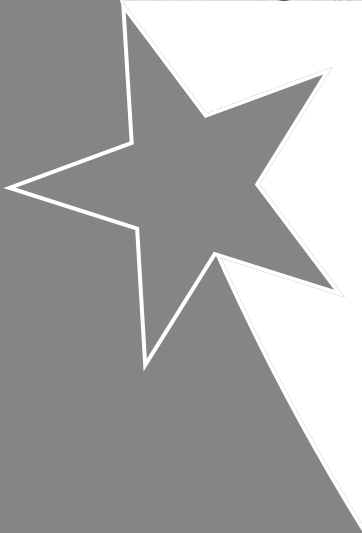
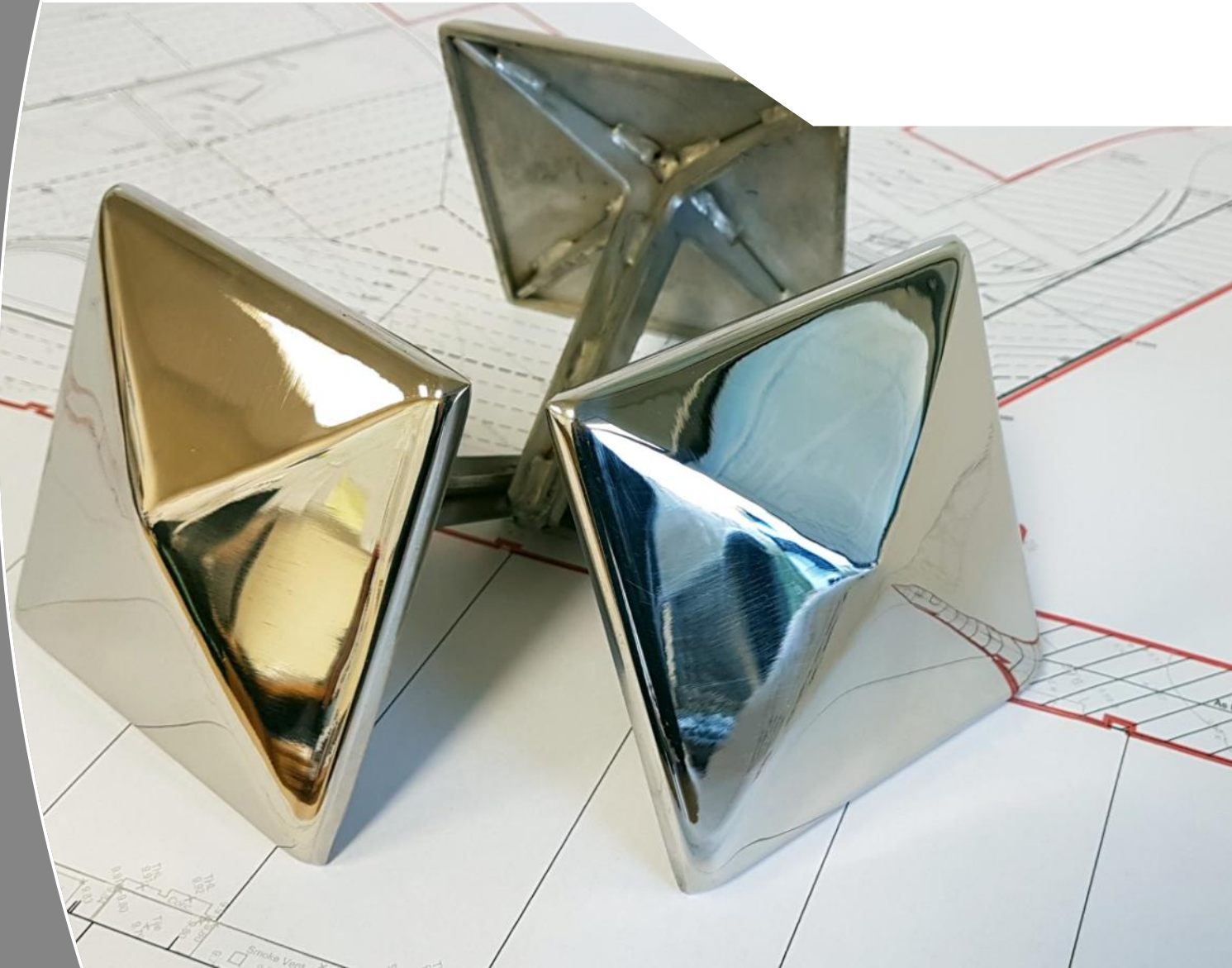


Kent Pyramid Road Demarcation Stud



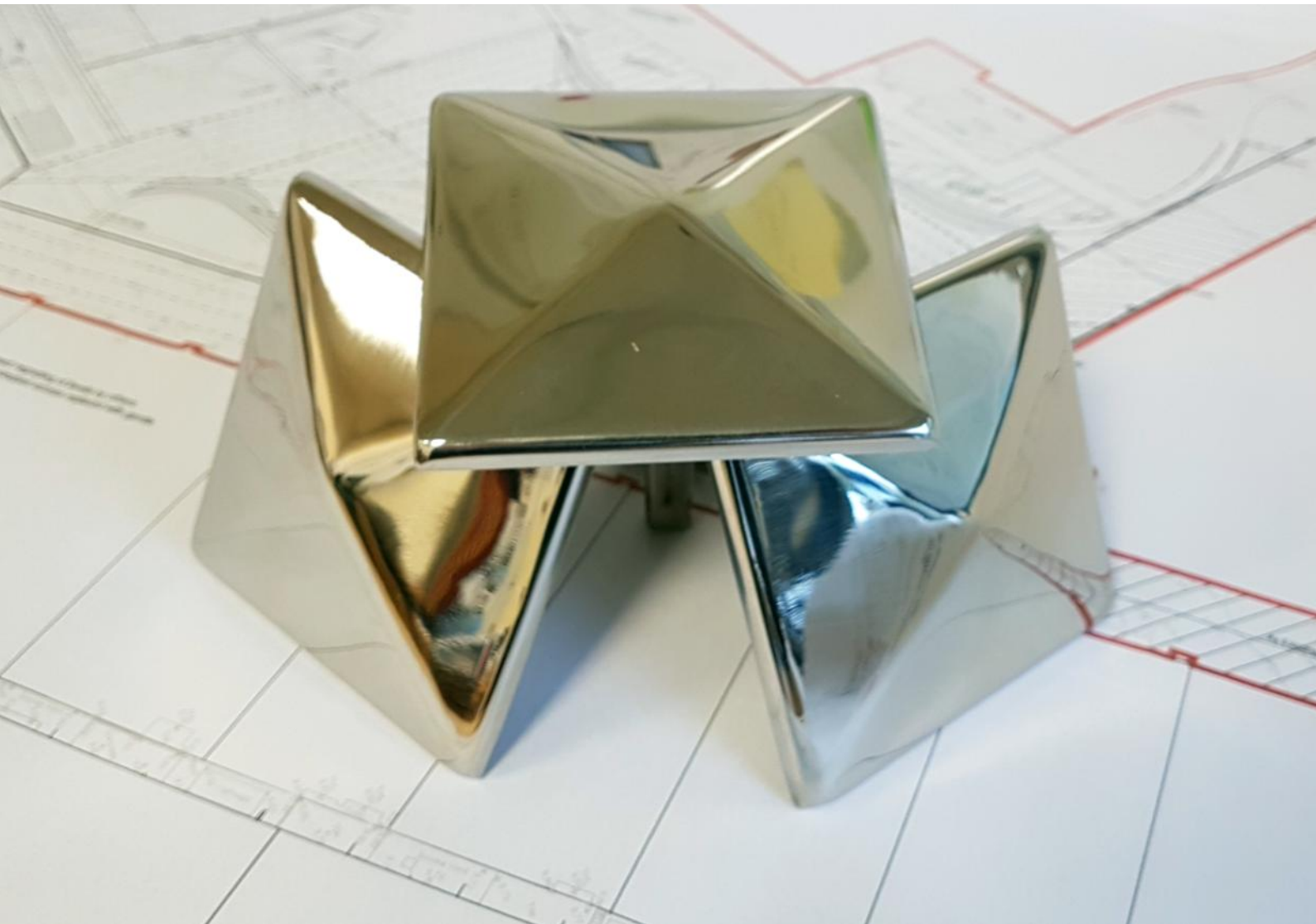


The Kent Pyramid Road Demarcation Studs are 3.93" (100) x 3.93" (100mm) with 0.70" (18mm) height from ground finish to top point of stud.

These Studs are designed to be large enough for drivers of cars to notice them visibly and also be noticeable if driven over. They are made from 0.11" (3mm) thick grade 316 stainless steel and have a Electro polished finish.

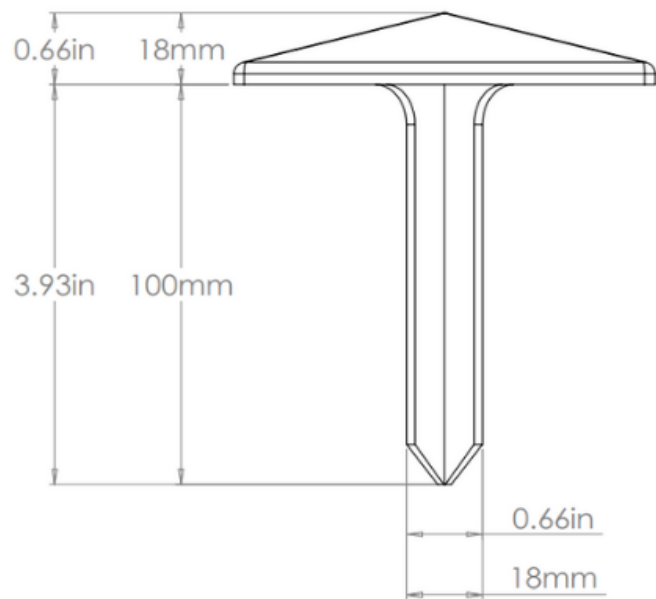
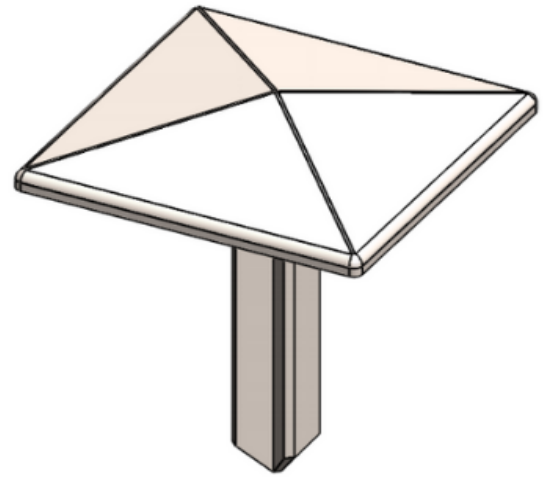
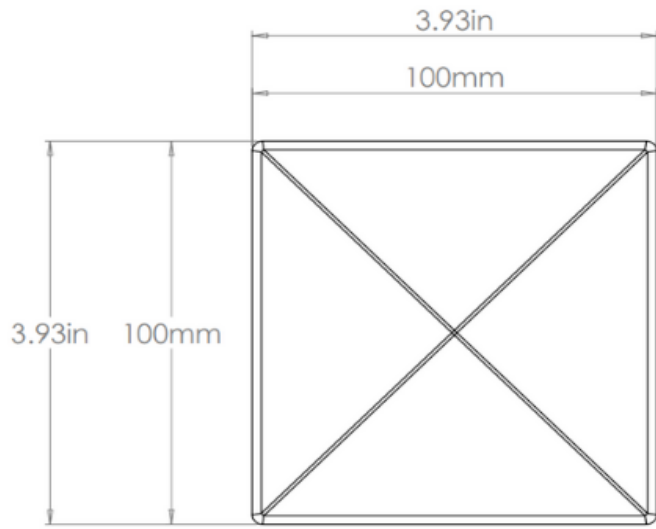
Features:

- *Pyramid Stud 100x100x18mm*
- *Grade 316 Stainless Steel*
- *Electro Polished Finish*
- *3.93" (100mm) long root fixing*



Kent Pyramid Road Demarcation Stud

KENT PYRAMID ROAD DEMARICATION STUD - KPRDS 100



Product Code	Visible Height	Width	Depth
KPRDS - 100	0.70 "(18mm)	3.93"(100mm)	3.93"(100mm)

Stainless Steel Maintenance

Clean the stainless steel components using warm water with a mild detergent with a non abrasive cloth or sponge. Heavier stains may require the use of a nylon scouring pad or a stainless steel cleaner. To remove paint or graffiti (or light concrete splashes) use a cloth and alkaline or solvent paint strippers according to type of paint. For Satin Finish Stainless try to follow the direction of the grain when cleaning vigorously or polishing. For Bead Blasted Finish use a circular motion. Rust spots or 'tea stains' can occur on the surface of the material, these are normally caused by contamination from ordinary mild steel, particularly in areas where construction work has been undertaken. Where contamination of the stainless has occurred from ordinary mild steel coming into contact with the stainless, use Rust Remover 410. In cases where the surface is severely stained as a result of severe environmental conditions or scratched due to misuse, it may still be possible to restore the original finish using chemicals such as Oxalic Acid solution. There are many stainless steel polishes available to enhance the surface finish. We recommend Mister Stainless Ltd. as a provider for stainless steel cleaning products

Galvanised Mild Steel Maintenance

Purchase an alkaline cleaner. These products are non-abrasive combinations of detergents and solvents designed to clean and maintain galvanised steel. With the use of rubber gloves, fill a bucket with a gallon of hot (not scalding) water and add one ounce of the Alkaline Cleaner. Stir well. Dip a soft bristle brush into the cleaning solution. Beginning at one end of the Product, scrub gently, using a circular motion. Go from one end of the product to the other, overlapping the circles repeatedly to make sure you do not miss any spots. Rub the towel over the product to make sure the steel has been cleaned. The towel will remove any excess water or cleaner from your project. After you have used the towel, let it dry.

Powder Coat Maintenance

Start by carefully removing any loose surface deposits with a wet sponge. Then use a soft brush (non abrasive) and a dilute solution of a mild detergent, eg, pH-neutral liquid hand dishwashing detergent in warm water (DO NOT use solvents) to remove dust, salt and other deposits. Ensure you thoroughly rinse the surfaces with clean fresh water after cleaning to remove all residues.

Specify

Customise your size, can be built to a bespoke size

Choose your Visible height

Specify:
Kent Pyramid Road Demarcation Stud (KPRDS - - 100); 3.93" (100mm) x 3.93" (100mm) square, 0.70" (18mm) visible height; Grade 316 Stainless steel; Cold Rolled Electropolished Finish

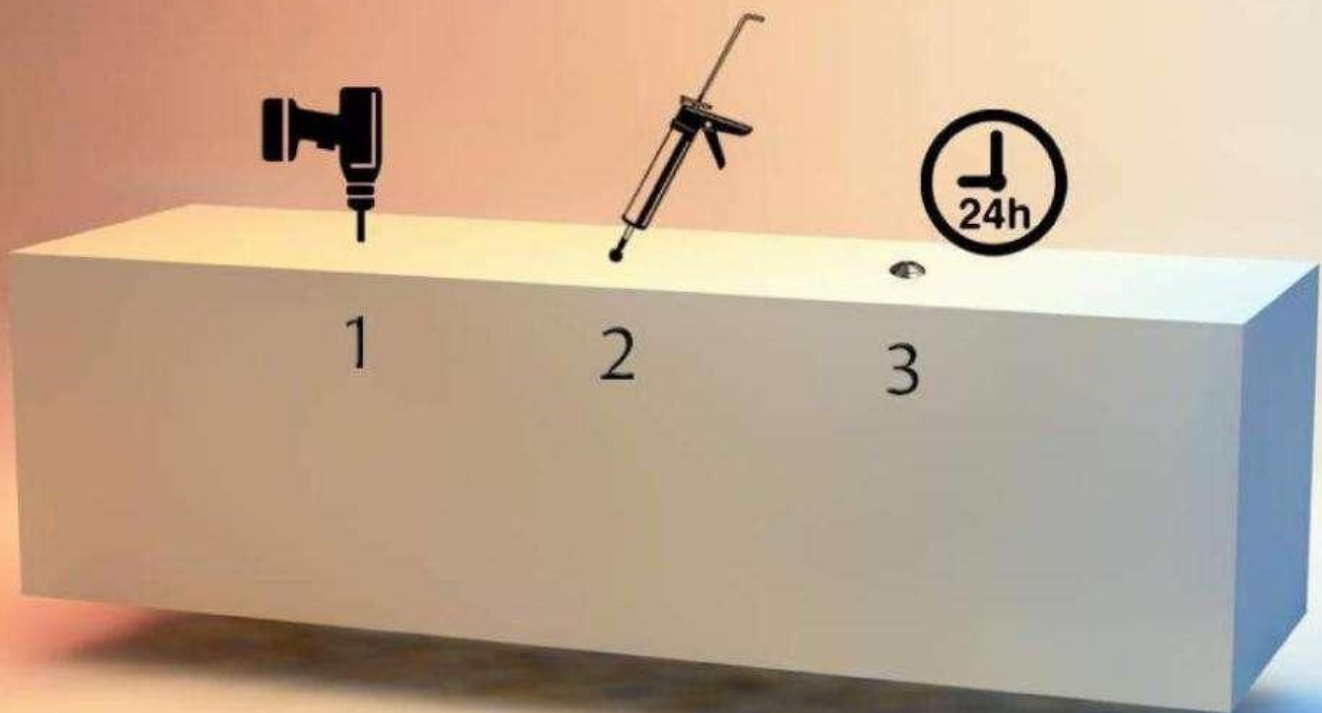
Choose your steel:
*Grade 304 Stainless steel
Grade 316 Stainless steel*

Choose your Finish
*Powder coated
Cold Rolled Electropolished
Shot Peened
Passivated
Satin Finish Polished*



Installation of Studs

1. Drill a 0.78" (20mm) diameter hole by 3.93" (100mm) deep
2. Fill with chemical mortar
3. Insert stud in correct orientation and leave to set for 24 hours



Grade 304 vs. 316 Stainless Steel

The last thing our we want for our customers is to have to deal with staining or rust on their Kent Stainless Steel products. If your product will be exposed to harsh or coastal environments , we recommend upgrading to grade 316L stainless steel which extends the life span of the product for years more. Consider this fact when planning a future project.

Grade 304L Stainless Steel

304 stainless steel is the most common form of stainless steel used around the world. It contains between 16 and 24 percent chromium and up to 35 percent nickel, as well as small amounts of carbon and manganese. 304 can withstand corrosion from most oxidizing acids. That durability makes 304 easy to sanitize, and therefore ideal for kitchen and food applications. It is also common in buildings, décor, and site furnishings. However, it is susceptible to corrosion from chloride solutions, or from saline environments like the coast.

Benefits

- Lowest Cost Corrosion resistant option
- Resistant to oxidation
- Low maintenance
- Durable and strong

Grade 316L Stainless Steel

316 grade is the second-most common form of stainless steel. It has almost the same physical and mechanical properties as 304 stainless steel, and contains a similar material make-up. The key difference is that 316 stainless steel incorporates about 2 to 3 percent molybdenum. The addition increases corrosion resistance, particularly against chlorides and other industrial solvents. 316 stainless steel is commonly used in many industrial applications involving processing chemicals, as well as high-saline environments such as coastal regions and outdoor areas where de-icing salts are common. Due to its non-reactive qualities, 316 stainless steel is also used in the manufacture of medical surgical instruments.

Benefits

- Superior Corrosion resistance
- Chlorine Resistant
- Low maintenance
- Durable and strong

Testimonials

PARSONS
 Parsons International Limited
 P. O. Box 2091, Doha, Qatar • Tel: (+974) 4405-0000 • Fax: (+974) 4427-7234 • www.parsons.com

Kent Stainless
 Ardaraun, Westfield
 Ireland

5 January 2012

Attention : Mr. Shane Curtis & Michael Herley
 Project : Laval Construction Package 1 - CPI
 Subject : CPI - Kent Stainless Laval City, Qatar

Dear Shane & Michael,

I am writing to express my thanks for the works delivered by Kent Stainless to the Laval Project in Doha. Your willingness to work with the client, designers and contractors to finalise the specialist detailing, produce the shop drawings and samples has been second to none and has added significant value to the project.

The in-house engineering completed by Kent Stainless and the knowledge and advice given to finalise the design was outstanding. All the products delivered to date have been fully compliant and of the highest quality.

Finally, your frequent presence on site and customer focus has enabled this technically difficult package of works to be finalised in the shortest possible time.

We hope to see you again on future projects.

Yours Sincerely

Patrick McCormick
 Parsons CPI

“ The In-house engineering completed by Kent Stainless and the Knowledge and advice given to finalise the design was outstanding ”

- Parsons

SKANSKA

Skanska Construction UK Ltd T/A
 Skanska Infrastructure Services
 Unit 1
 Skanska Centre (Weston)
 Danbury Way
 Maple Grove
 Ruislip, London
 Middlesex UB8 3PH

For the attention of: Michael Hurley

Phone: +44 (0)181 779933
 Fax: +44 (0)181 625593

Web: www.skanska.co.uk
 Reg. in England
 Reg. No: 101482

Registered Office: Maple Grove House
 Danbury Way, Maple Grove, Ruislip, Middlesex, UB8 3PH

Kent Stainless
 Ardaraun
 Westfield
 Ireland

Our ref: MW/02/2012
 Your ref: 29 March 2012

Dear Michael,

Re: Letchworth Garden City, Manholes, Grilles, Drainage & Tree Pit Frames

With reference to Letchworth Garden City, we were delighted to work on such a prestigious award winning scheme. The choice of subcontractor and suppliers was crucial to us delivering such a high standard & Kent Stainless were instrumental in this.

As with all our projects during the last 5 years Kent delivered promptly and with the right quality - thanks for your help & keep up the good work.

The client and the main contractor both were delighted with the quality of the work supplied by Kent Stainless. You showed great flexibility and your quality was right first time again.

Yours faithfully,
 for and on behalf of
 Skanska Infrastructure Services

Matt Wincott

“ The client and the main contractor both were delighted with the quality of the work supplied by Kent Stainless ”

- Skanska

DIRECTOR OF SERVICES CORPORATE AFFAIRS & ROADS
 ADDW
 10th January 2010

Mr. Stephen Roche,
 Kent Stainless,
 Ardaraun,
 Westfield,
 Ireland.

RE: Wexford Main Street Regeneration

Dear Stephen,

Thanks for your help with the designs of manholes and gully covers for Wexford Main Street. We invested heavily in the new paving works and to break up the beautiful sidewalk with solid cast covers would have been a real shame. The solutions you provided with recessed covers in stainless steel with laser engraving blended in perfectly with the look and feel we wanted to portray for the street.

Because of the engineering know-how you provided and flexibility in design, we will certainly return to Kents for further work. We were delighted to find an Irish manufacturer could provide all solutions, and even better a Wexford based engineering firm.

Yours faithfully,

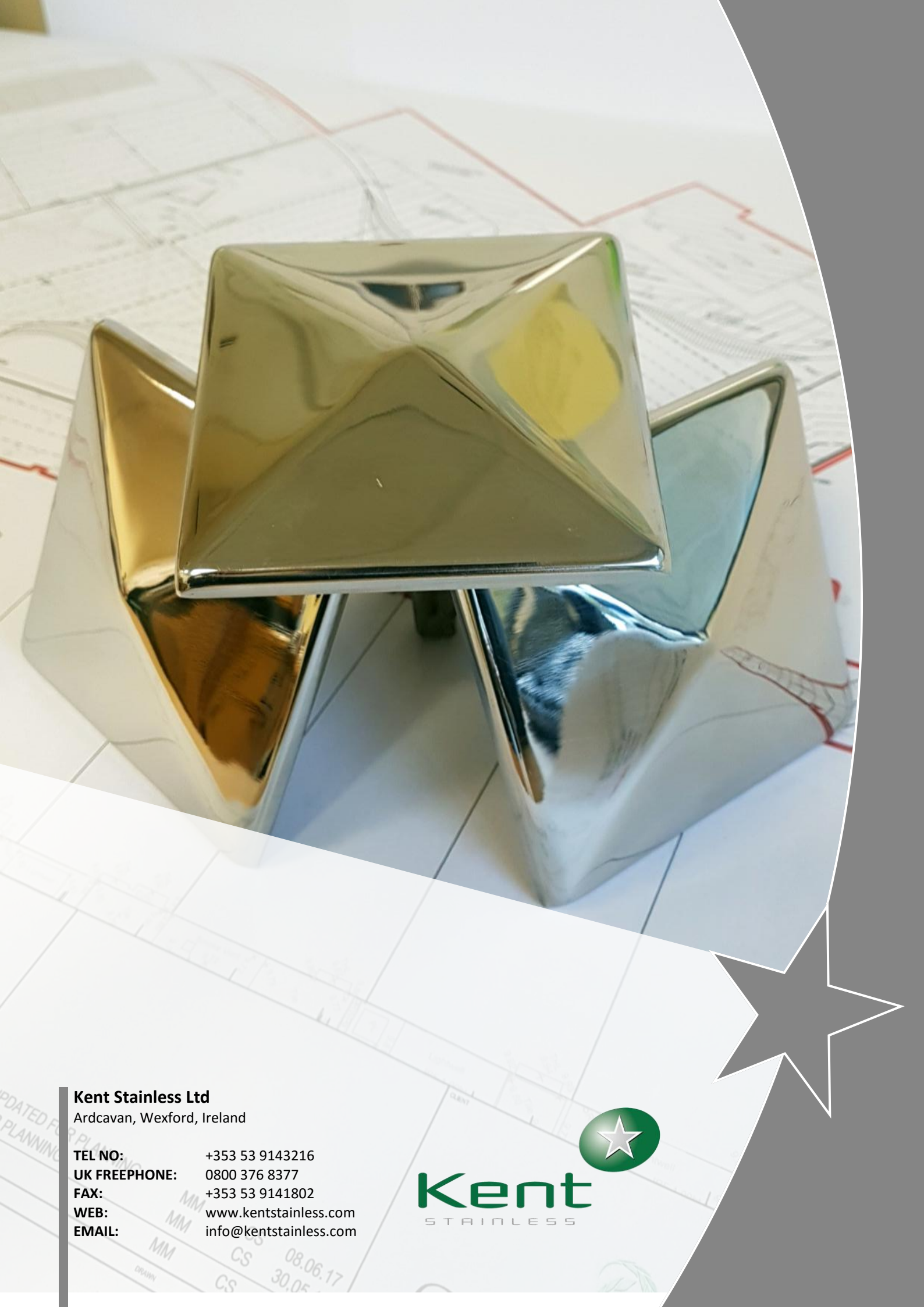
Adrian Doyle,
 Director of Services,
 Corporate Affairs & Roads

e-mail: adrian.doyle@wexfordcc.ie
 tel: 053 9176400

100 Years of Community Service
 Cuid éireann ag tabairt arís leis don ghraif

“ Because of the engineering know-how you provided and flexibility in design, we will certainly return to Kents for further work ”

- Wexford County Council



Kent Stainless Ltd

Ardcavan, Wexford, Ireland

TEL NO: +353 53 9143216
UK FREEPHONE: 0800 376 8377
FAX: +353 53 9141802
WEB: www.kentstainless.com
EMAIL: info@kentstainless.com



Kent
STAINLESS