



KENT T8 - Type 8 Broadcast Box

The Kent Paver in Ground Power Unit, **T8 - Type 8 Broadcast Box** is an ideal product for trading areas, open air areas with events and exhibitions where Audio, Video and Fibre connections are required. This model, Type 8 has a 550mm x 600mm top recessed cover.

The Type 8 was designed to take a mix of Audio, Data, Fibre, Digital Video sockets and we recommend some spare ports as follows:

- 8 XLR Audio
- 4 RJ45 Data
- 4 Fibre
- 4 Digital Video

Note that separate connection cables are required from the distribution board to each socket in order to eliminate interference or static between the connections.

The lids can be closed during operation, this necessitates a 450mm overall depth.

The hinged recessed cover ensures the units are unobtrusive when not in-use. The In Ground Broadcast Box Units covers are manufactured in accordance with FACTA and BS EN124 standards. The covers are suitable for 60mm deep paving blocks and are manufactured to meet required loadings. They are fabricated in grade 316 stainless steel as standard.

Features

- ❑ Gas Rams
- ❑ Up to 28 Broadcast sockets
- ❑ Slam lock
- ❑ Secondary secure holding down lock
- ❑ Suitable for public entertainment areas
- ❑ 110mm diameter drain outlet point

Designed For

- ❑ 8 XLR Audio
- ❑ 4 RJ45 Data
- ❑ 4 Fibre
- ❑ 4 Digital Video
- ❑ 4 Spare Socket Ports



Product Code	Visible Frame Size	Unit Depth	Cable Duct (Ø)
KIGUBB550/600	550mm x 600mm	450mm	125mm

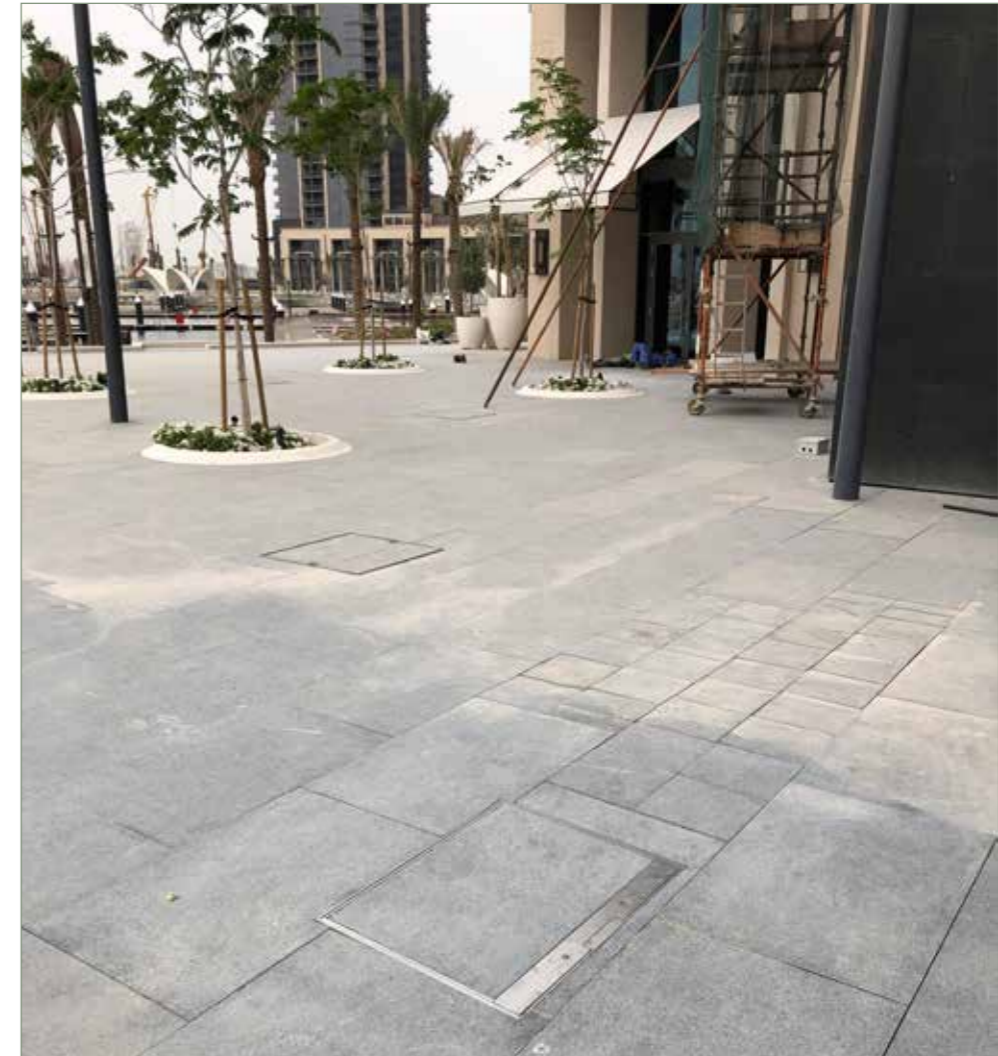


44 Ton Truck
FACTA B Loading
EN124 B125 Loading

Specify Kent IGUBB – Type 8 Broadcast Box Unit; 550mm x 600mm top; with a 450mm depth (Closed Use); Grade 316 Stainless Steel; 8 XLR Audio, 4 RJ45 Data, 4 Fibre, 4 Digital Video, 4 Spare



KENT T8 - Type 8 Broadcast Box



This box is used where Outdoor Digital Displays, or Concert Performance need to be connected temporarily.

