

**KENT T3US POWER IGU - 2 FOOD TRUCKS + Data AV**



Our Type 3 In Ground Unit for the USA market has a 24" x 24" top cover - recessed 2.5 to take 2" paver blocks plus bedding.

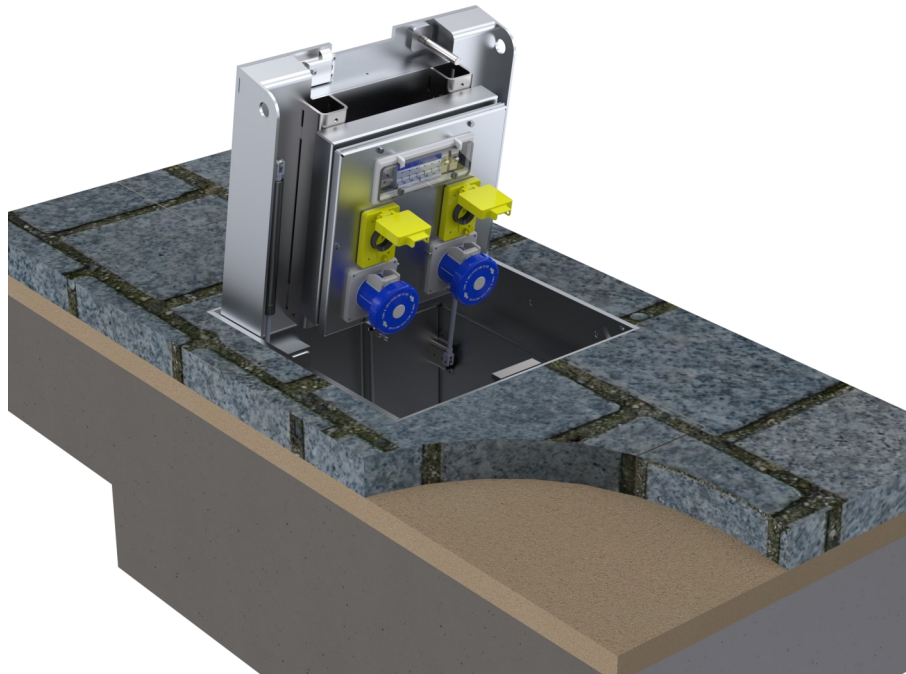
UL Listed electrical components are housed under a hinged recessed manhole cover. The cover itself can withstand slow moving wheel loads from a 40 ton truck.

This outdoor In Ground Power Box allows 2 Food/Coffee carts with light duty power requirements plus 2 larger Food Trucks with heavy duty power requirements for cooking such as burger/hot dog, waffle vendors to plug into power while eliminating the trailing cables and cords and avoiding the noise and pollution associated with a portable gas generator.

Alternatively the same size box will house heavy duty power for 2 Food Trucks plus a strip of Data/AV connections

Individual electrical circuits work in parallel (not in sequence) - so 1 vendor tripping their circuit will not affect the neighboring vendor

A 'notch' on the front cover can be revealed or concealed. When revealed the power cords can exit via this notch allowing the unit be used to deliv-



**Features**

- Gas Rams
- Up to 2nr NEMA 6P rated 60Amp plus 2nr 20 Amp receptacles
- Suitable for Market Trading Areas
- 4" dia drainage outlet pipe

**Designed For**

- 2nr 60A 3 Phase Plus 2nr 20A 1 Phase
- Typically for access by heavy duty power users like burger vendors plus neighboring lower power users like coffee stalls.
- Or for Burger vendors who also need data connections
- Contact us for alternate utility configurations that could fit in the same box



Medium Duty

**AASHTO H20 Loading**

Factory tests are carried out of 24,800lbs point load from a 9" footprint of a pneumatic tyre from a heavy goods vehicle.

16,000 lbs is the H-20 Design Loading Criteria.

Our tests are done on an unfilled recessed cover

Product Code	Visible Frame Size	Unit Depth	Cable Duct (Ø)	Drainage (Ø)
KIGU T3US 24"/24"	24" x 24"	18"	5"	4"

Specify: Kent IGU - Type 3(US); (KIGU 24/24); 24" x 24" top ; with an 18" depth; Grade 316 Stainless Steel; 2nr 60 Amp Three Phase 60A - 4 Pole – 5 Wire 120/208VAV Receptacles plus 2nr 20 Amp 3 Phase Nema L5-20 Receptacles. 4" Bottom Drain outlet must be connected to a 4" drain pipe on site

Specify: Kent IGU - Type 3(US); (KIGU 24/24); 24" x 24" top ; with an 18" depth; Grade 316 Stainless Steel; 2nr 60 Amp Three Phase 60A - 4 Pole – 5 Wire 120/208VAV Receptacles plus 4nr RJ45 Data / XLR Audio Connections. 4" Bottom Drain outlet must be connected to a 4" drain pipe on site



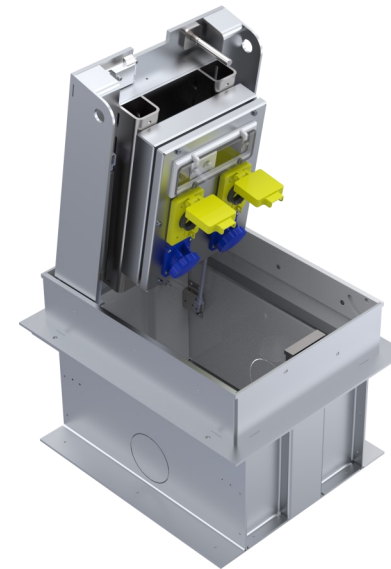
**KENT T3 US Power IGU - 2 FOOD TRUCKS + Data AV**

Designed for:

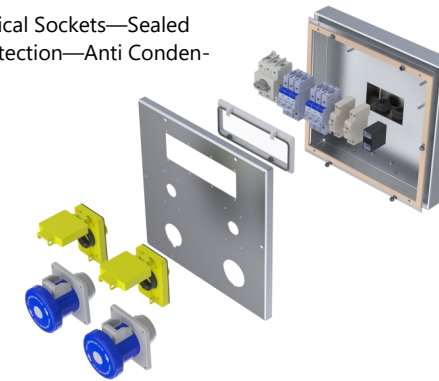
- 2 Food Trucks x2
- Plus 2 Food Carts x2

Also Designed for:

- 2 Food Trucks x2
- Plus 4 AV x2



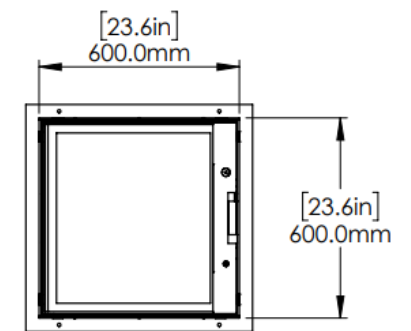
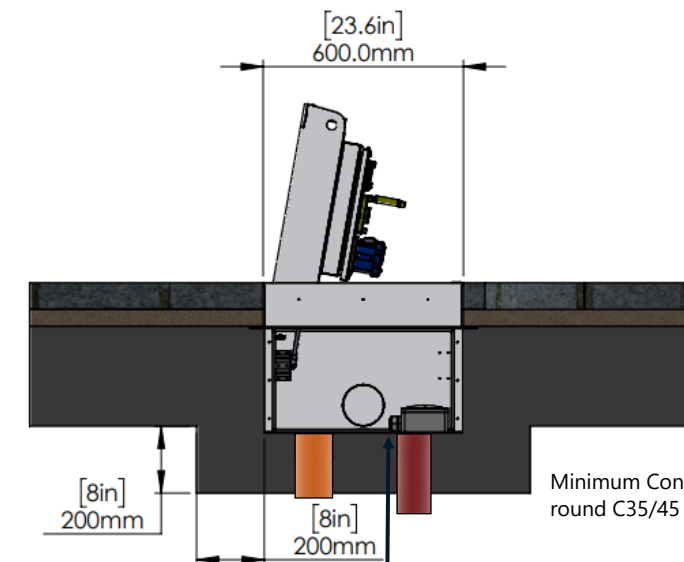
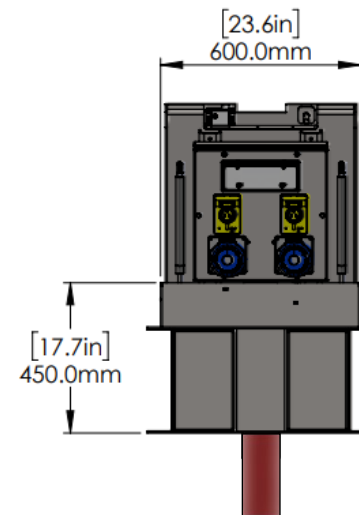
Panel Contains Electrical Sockets—Sealed Window—Circuit Protection—Anti Condensation Heater



Paviour directly adjacent to frame to be bedded using an epoxy mortar or polymer modified mortar.

Alternative Knockouts For 5"Ø (125mm) Cable Duct Laser Cut Hole Knockout

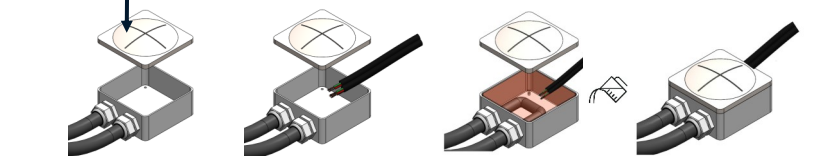
2 stage delivery - outer box delivered to site first followed by electrical panel (above) - to be connected by registered electrical installer



Minimum Concrete Surround C35/45

4"Ø (110mm) vertical drainage outlet pre-welded to bottom of box

**NB ensure connection to drainage system**



Connect incoming power to IP67 NEMA 6P junction box - Fill with resin and close