

KENT T2US POWER IGU - 2 FOOD TRUCKS



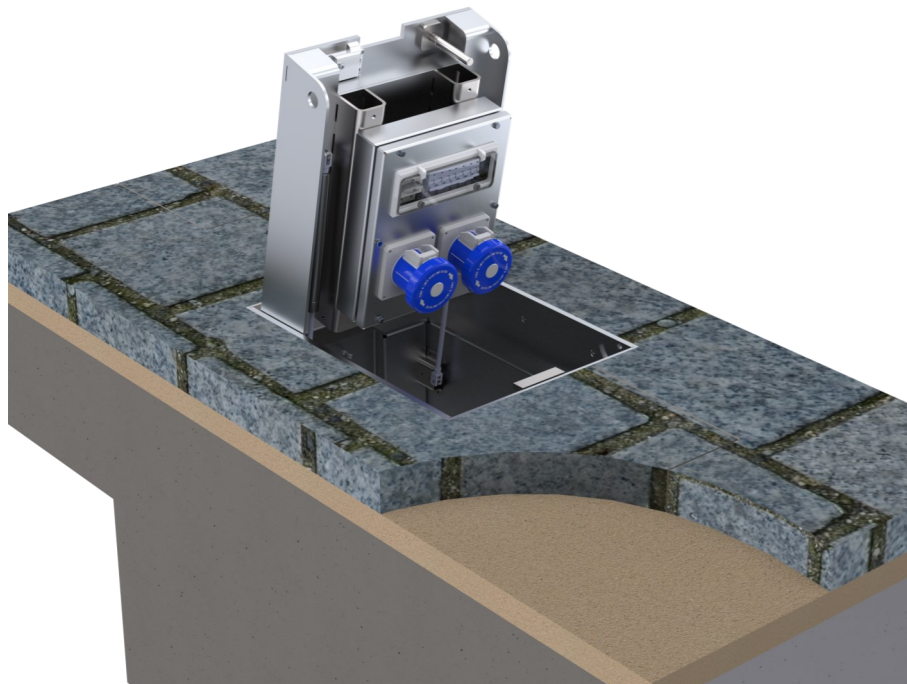
Our Type 2 In Ground Unit for the USA market has a 18" x 24" top cover - recessed 2.5" to take 2" paver blocks plus bedding.

UL Listed electrical components are housed under a hinged recessed manhole cover. The cover itself can withstand slow moving wheel loads from a 40 ton truck.

This outdoor In Ground Power Box allows 2 Food Trucks - with heavy duty power requirements for cooking such as burger, hot dog, waffle vendors, to plug into power while eliminating the trailing cables and cords and avoiding the noise and pollution associated with a portable gas generator.

Individual electrical circuits work in parallel (not in sequence) - so 1 vendor tripping their circuit will not affect the neighboring vendor

A 'notch' on the front cover can be revealed or concealed. When revealed the power cords can exit via this notch allowing the unit be used to deliver power while it is in the closed position.



Features

- Gas Rams
- Up to 2nr 50 Amp NEMA 6P rated receptacles
- Alternatively use 2 20 Amp Receptacles plus a line of 4 Data/AV connections
- Suitable for Market Trading Areas
- 4" dia drainage outlet pipe

Designed For

- 2nr 60A 3 Phase
- Typically for access by burger vendors
- Also used by lower power vendors who also need a strip of Data connections (eg Lighting, Monolith Displays, Ticket Sales)
- Contact us for alternate utility configurations that could fit in the same box



Medium Duty AASHTO H20 Loading

Factory tests are carried out of 24,800lbs point load from a 9" footprint of a pneumatic tyre from a heavy goods vehicle.

16,000 lbs is the H-20 Design Loading Criteria.

Our tests are done on an unfilled recessed cover

Product Code	Visible Frame Size	Unit Depth	Cable Duct (Ø)	Drainage (Ø)
KIGU T2US 18"/24"	18" x 24"	18"	5"	4"

Specify: Kent IGU - Type 2(US); (KIGU 18/24); 18" x 24" top ; with an 18" depth; Grade 316 Stainless Steel; 2nr 60 Amp Three Phase 60A - 4 Pole - 5 Wire 120/208VAV Receptacles. 4" Bottom Drain outlet must be connected to a 4" drain pipe on site

Specify: Kent IGU - Type 2(US); (KIGU 18/24); 18" x 24" top ; with an 18" depth; Grade 316 Stainless Steel; 2nr 20 Amp 3 Phase Nema L5-20 Receptacles plus 4nr RJ45 Data / XLR Audio Connections. 4" Bottom Drain outlet must be connected to a 4" drain pipe on site



KENT T2US Power IGU - 2 FOOD TRUCKS

Designed for:

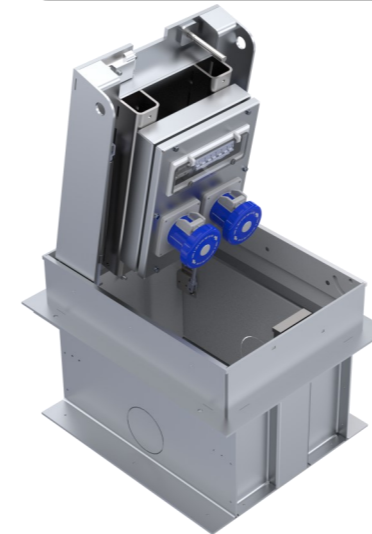
- **2 Food Trucks**  x2
- OR
- **2 Food Carts**  x2
- **Plus 4 Data / Audio-Visual**  x4



2 x 60 Amp - for Food Trucks

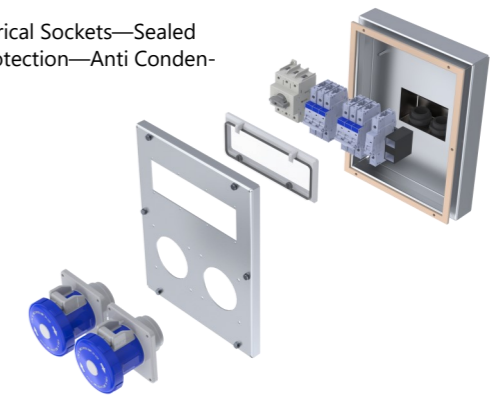


2 x 20 Amp + 4 x RJ45 / AV - for Food Carts with Data Connection



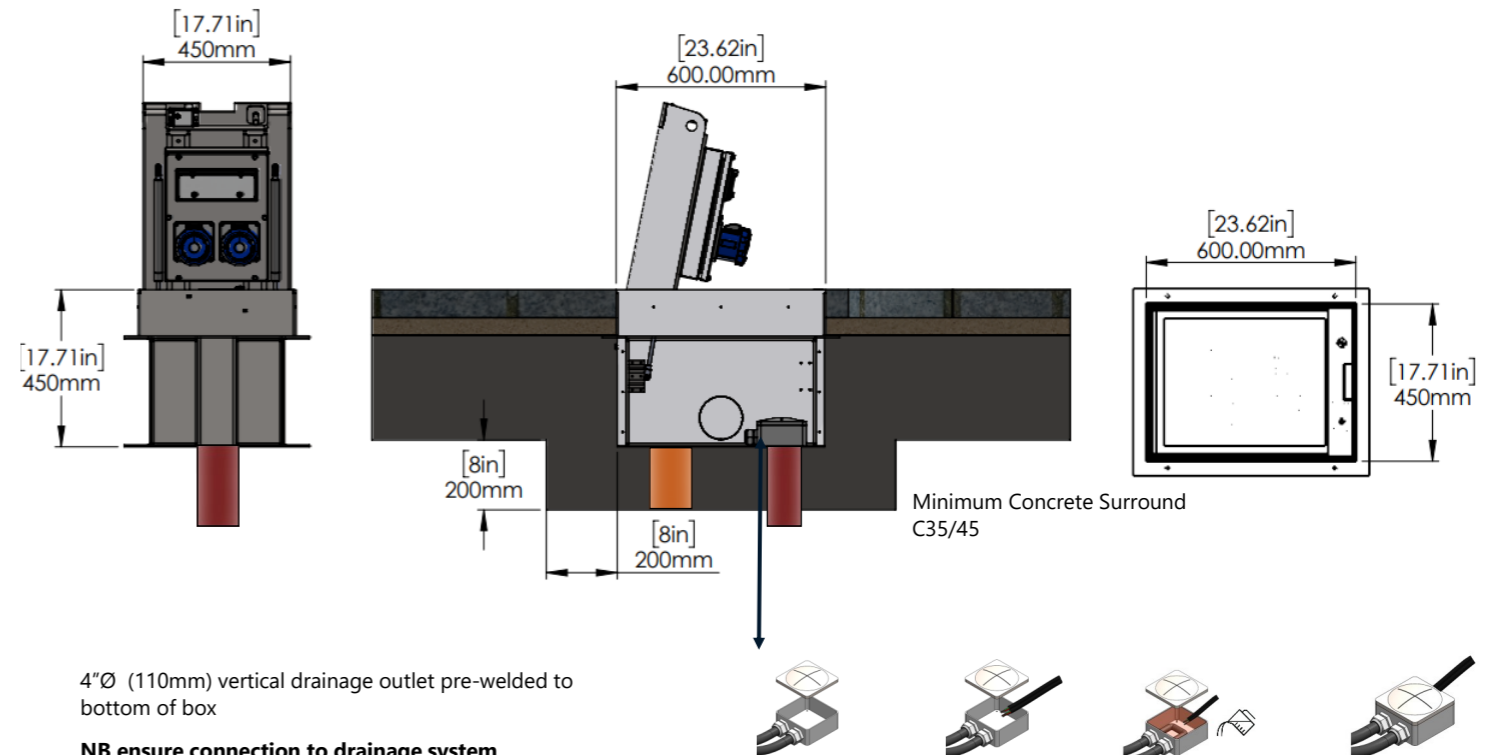
Paviour directly adjacent to frame to be bedded using an epoxy mortar or polymer modified mortar.

Panel Contains Electrical Sockets—Sealed Window—Circuit Protection—Anti Condensation Heater



Alternative Knockouts For 5"Ø (125mm) Cable Duct Laser Cut Hole Knockout

2 stage delivery - outer box delivered to site first followed by electrical panel (above) - to be connected by registered electrical installer



4"Ø (110mm) vertical drainage outlet pre-welded to bottom of box

NB ensure connection to drainage system

Connect incoming power to IP67 NEMA 6P junction box - Fill with resin and close