

KENT T1US POWER IGU - 2 FOOD CARTS



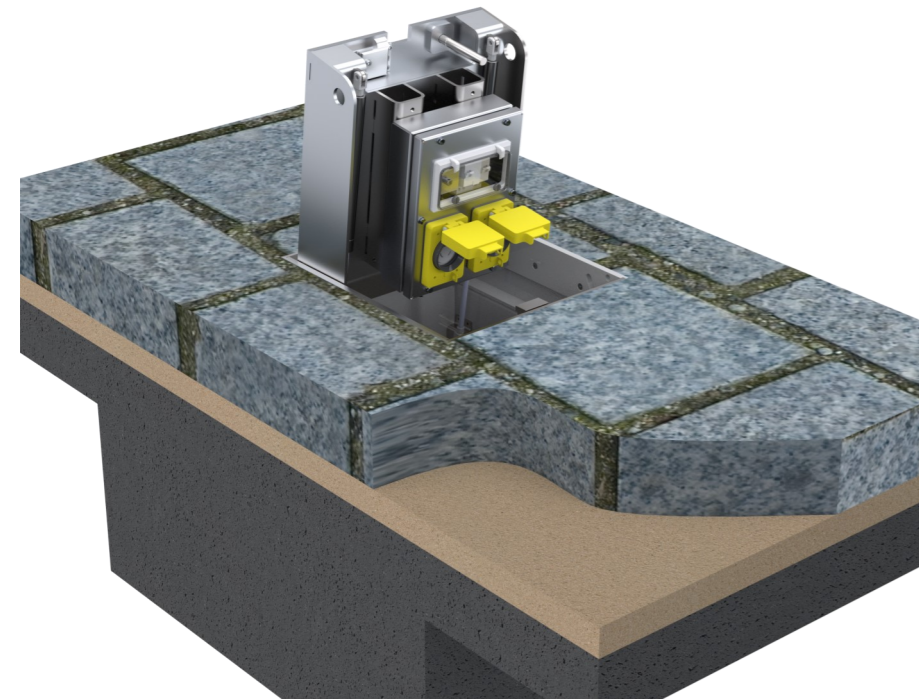
Our Type 1 In Ground Unit for the USA market has a 18" x 16" top cover - recessed 2.5" to take 2" paver blocks plus epoxy mortar bedding.

UL Listed electrical components are housed under a hinged recessed manhole cover. The cover itself can withstand slow moving wheel loads from a 40 ton truck.

This outdoor In Ground Power Box allows 2 food/coffee carts to plug into power while eliminating the trailing cables and cords and avoiding the noise and pollution associated with a portable gas generator.

Individual electrical circuits work in parallel (not in sequence) - so 1 vendor tripping their circuit will not affect the neighboring vendor

A 'notch' on the front cover can be revealed or concealed. When revealed the power cords can exit via this notch allowing the unit be used to deliver power while it is in the closed position.



Features

- Gas Rams
- Up to 2nr 20 Amp NEMA 6P rated receptacles
- Suitable for 2 Food Carts or equivalent
- 4" dia drainage outlet pipe

Designed For

- 2nr 20A 1 Phase
- Typically for coffee carts / access by maintenance crews for Power Washers, Lighting, Monolith Displays, Ticket Sales
- Contact us for alternate utility configurations that could fit in the same box



Medium Duty

AASHTO H20 Loading

Factory tests are carried out of 24,800lbs point load from a 9" footprint of a pneumatic tyre from a heavy goods vehicle.

16,000 lbs is the H-20 Design Loading Criteria.

Our tests are done on an unfilled recessed cover

Product Code	Visible Frame Size	Unit Depth	Cable Duct (Ø)	Drainage (Ø)
KIGU T1US 16"/18"	16" x 18"	18"	5"	4"

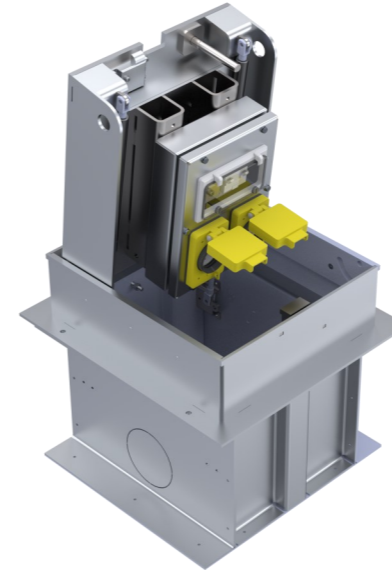
Specify: Kent IGU - Type 1(US); (KIGU 16/18); 16" x 18" top ; with an 18" depth; Grade 316 Stainless Steel; 2nr 20 Amp Single Phase NEMA L5-20R 125VAC Receptacles. 4" Bottom Drain outlet must be connected to a 4" drain pipe on site

KENT T1US Power IGU - 2 FOOD CARTS

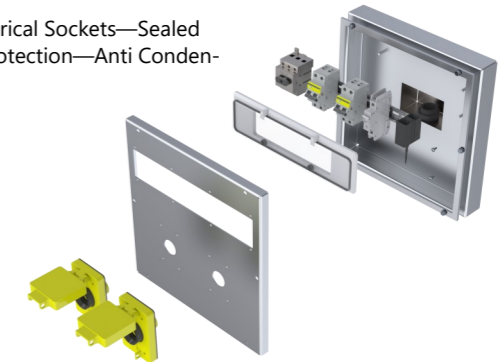


Designed for:

- 2 Food Carts x2



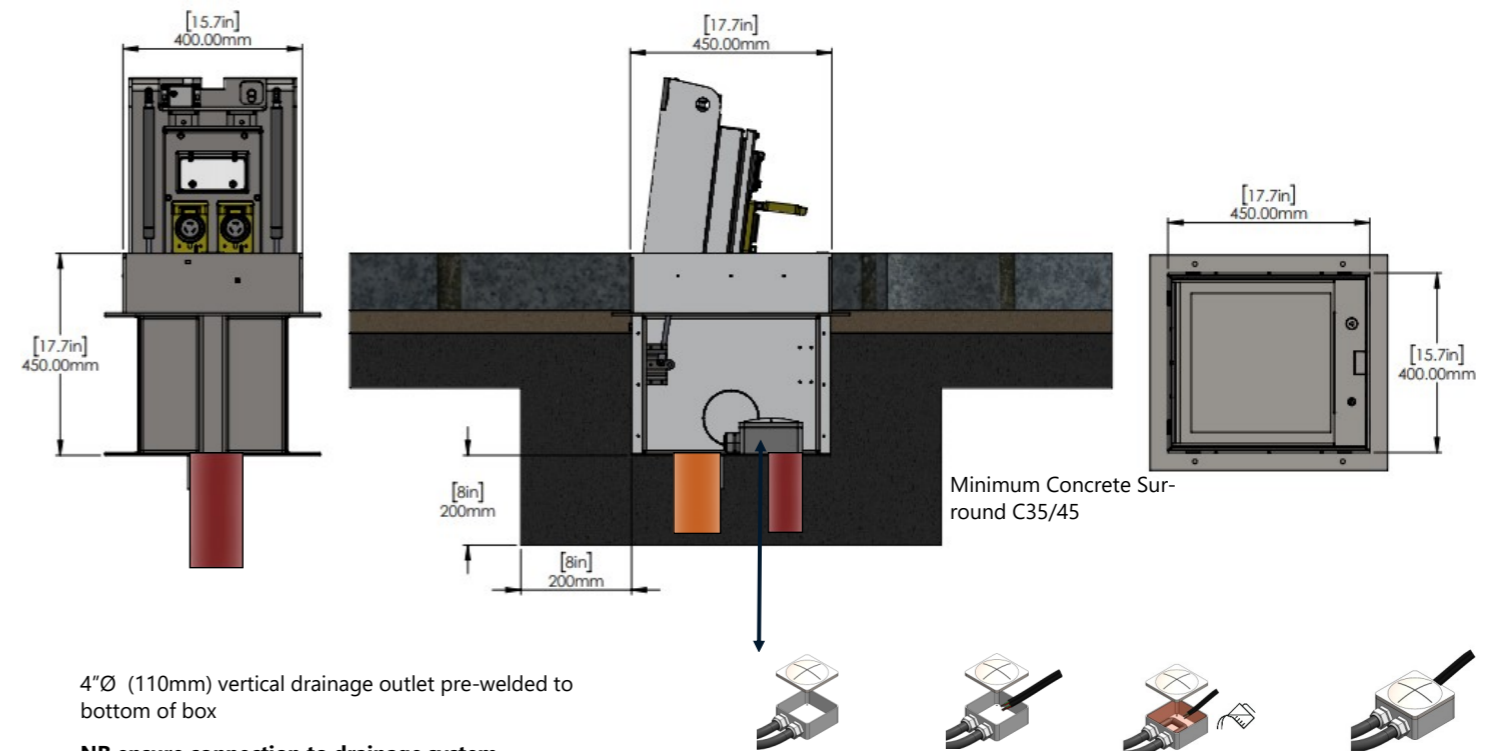
Panel Contains Electrical Sockets—Sealed Window—Circuit Protection—Anti Condensation Heater



Paviour directly adjacent to frame to be bedded using an epoxy mortar or polymer modified mortar.

Alternative Knockouts For 5"Ø (125mm) Cable Duct Laser Cut Hole Knockout

2 stage delivery - outer box delivered to site first followed by electrical panel (above) - to be connected by registered electrical installer



4"Ø (110mm) vertical drainage outlet pre-welded to bottom of box

NB ensure connection to drainage system



Connect incoming power to IP67 NEMA 6P junction box - Fill with resin and close